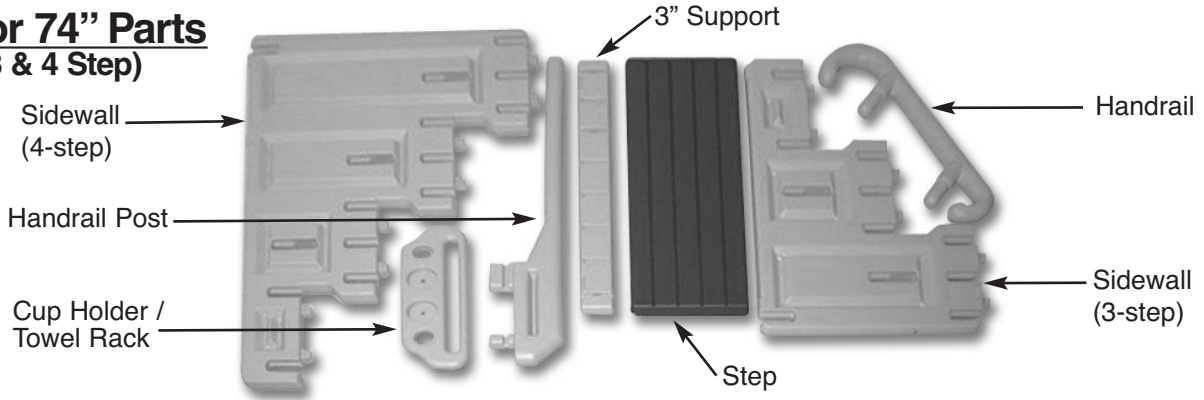


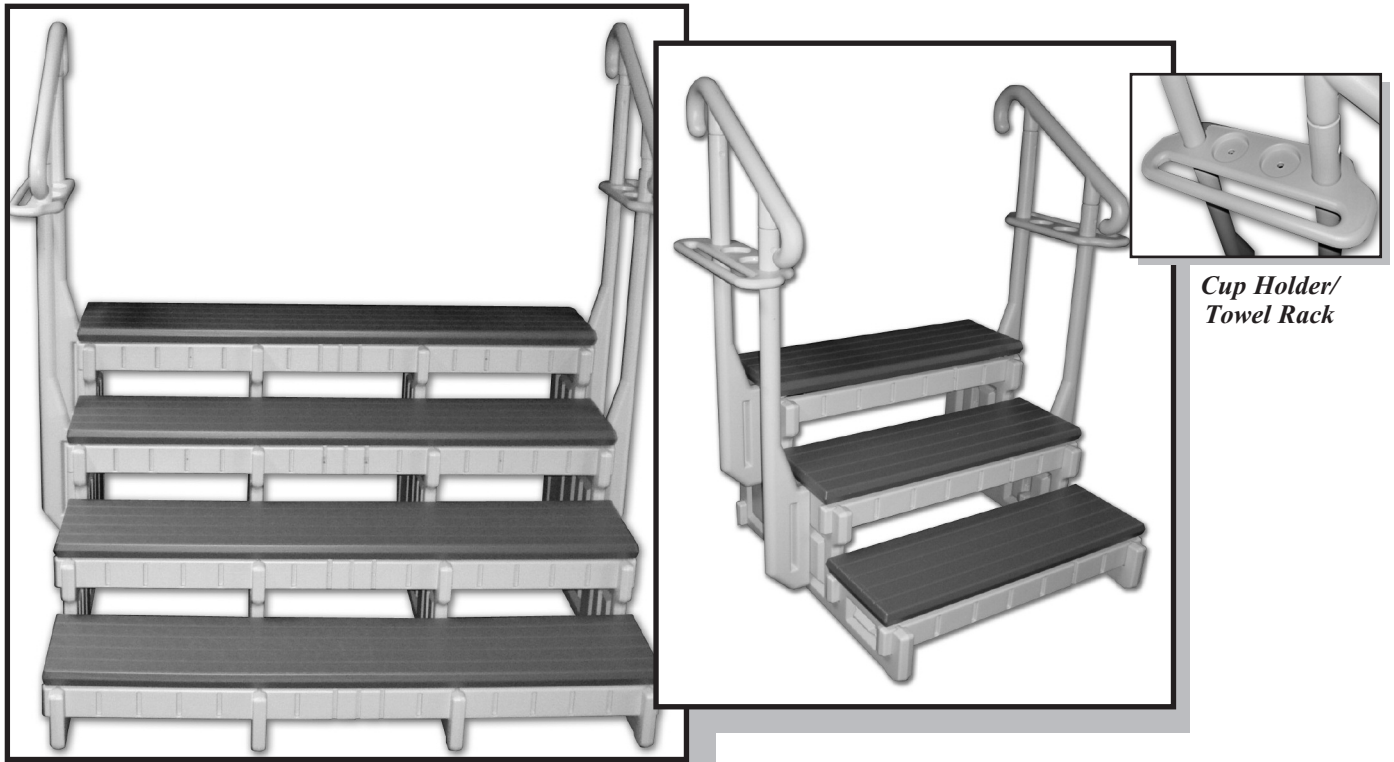
Confer - Signature Spa Steps

ASSEMBLY AND INSTRUCTION MANUAL

36" or 74" Parts (3 & 4 Step)



36" 3 Step	36" 4 Step	74" 3 Step	74" 4 Step
CARTON #1 CONTAINS: 2 - Sidewalls (3 step) 2 - Handrails 4 - Handrail Posts 2 - Cup Holder / Towel Rack 1 - Hardware Bag: 4 - Plugs 2 - Foam Strips (4 pads/strip) 4 - #10 x 1-1/4" Screws 1 - Set of Instructions CARTON #2 CONTAINS: 3 - 36" Steps 7 - 36" x 3" supports	CARTON #1 CONTAINS: 2 - Sidewalls (4 step) 2 - Handrails 4 - Handrail Posts 2 - Cup Holder / Towel Rack 1 - Hardware Bag: 4 - Plugs 2 - Foam Strips (4 pads/strip) 4 - #10 x 1-1/4" Screws 1 - Set of Instructions CARTON #2 CONTAINS: 4 - 36" Steps 9 - 36" x 3" supports	CARTON #1 CONTAINS: 4 - Sidewalls (3 step) 2 - Handrails 4 - Handrail Posts 2 - Cup Holder / Towel Rack 1 - Hardware Bag: 4 - Plugs 2 - Foam Strips (4 pads/strip) 4 - #10 x 1-1/4" Screws 1 - Set of Instructions CARTON #2 CONTAINS: 3 - 74" Steps 7 - 74" x 3" supports	CARTON #1 CONTAINS: 4 - Sidewalls (4 step) 2 - Handrails 4 - Handrail Posts 2 - Cup Holder / Towel Rack 1 - Hardware Bag: 4 - Plugs 2 - Foam Strips (4 pads/strip) 4 - #10 x 1-1/4" Screws 1 - Set of Instructions CARTON #2 CONTAINS: 4 - 74" Steps 9 - 74" x 3" supports



Cup Holder/
Towel Rack



Made in U.S.A. by

CONFER
plastics inc.
www.conferplastics.com

Confer - Signature Spa Steps

ASSEMBLY AND INSTRUCTION MANUAL

NOTE: STEP PARTS ARE DESIGNED FOR A TIGHT FIT, USING LIQUID SOAP DETERGENT WILL MAKE ASSEMBLY EASIER.



Step 1: Install the foam pads [4 for 36" step, 12 for 74" step] on the flat spots located on the bottom edge of sidewall.



Step 2: Using a rubber mallet install one of the 3" supports into the slot located on the bottom of sidewall. [36" step will have 2 sidewall, 74" will have 4 sidewall]. Install one plug into each sidewall.



Step 3: Turn the step assembly over and finish installing the 3" supports, [6 for 3-step, 8 for 4-step] into the front and back slots of each step location .



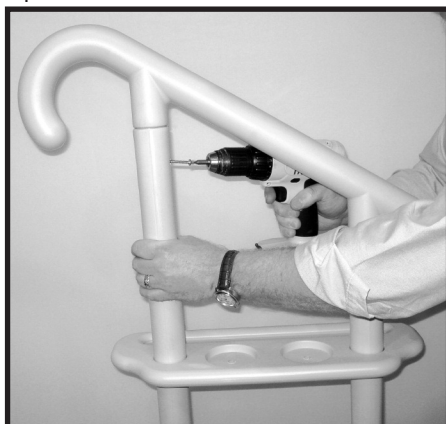
Step 4: Using a rubber mallet, install the four handrail posts into the middle slots of the top two step locations on the left sidewall, and the top two step locations of the right sidewall. Handrail posts must be seated into the slots.



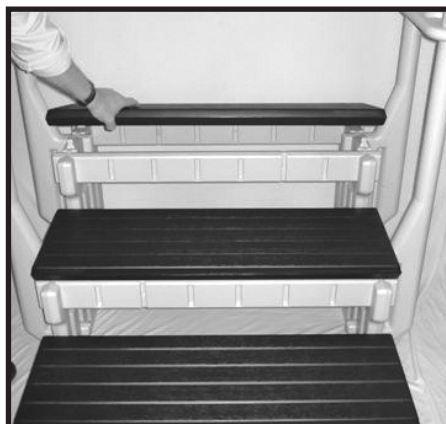
Step 5: Install towel rack/cup holder over the handrail posts with the towel rack to the outside of step, tap in place using the rubber mallet. Towel rack/cup holder may be positioned anywhere on the post.



Step 6: Tap the handrails into the handrail posts.



Step 7: Secure handrails using 1- # 10 x 1 1/4" screw into each post at pre-marked locations.



Step 8: Install the steps [finished edge out] by placing over the male lugs on the step sidewall and hitting downward with a rubber mallet.

MADE IN THE U.S.A. BY:



97 Witmer Road
North Tonawanda, NY USA 14120-2421
800-635-3213
Fax: 716-694-3102
www.conferladders.com
email: ladders@conferplastics.com