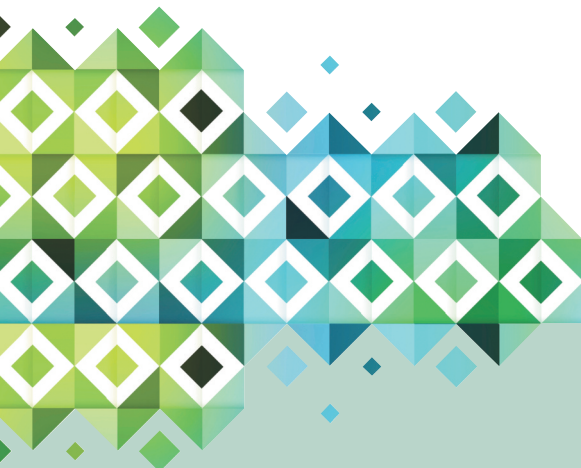




Mineral Harmony™

LOWER

Decreases pH and Alkalinity



ACTIVE INGREDIENT:

Sodium Bisulfate	95%
Other Ingredients.....	5%
TOTAL.....	100%

DANGER • POISON

KEEP OUT OF REACH OF CHILDREN

See side panel for additional precautionary statements.

Net Weight: 1.25 lbs.

Mineral treated spas require the regular testing and balancing of the water for the minerals to perform properly. Mineral Harmony was developed exclusively for use with mineral treated spa water.

Mineral Harmony LOWER will decrease the pH and alkalinity of spa water. The total alkalinity of spa water should be between 80 and 150 ppm. The pH should be between 7.2 to 7.8. High pH can cause scaling and/or cloudy water.

DIRECTIONS FOR USE:

Mineral Harmony LOWER should be used as necessary when pH levels are above 7.8.

NOTE: For best results, dissolve granular products first by adding to a small container of water. Then add the product to the spa water.

1. Make sure all equipment is OFF.
2. Add ¼ oz. (1-1/2 tsp.) of **LOWER** for every 500 gallons of spa water.
3. Turn ON circulation system for 30 minutes.
4. Retest water. If pH is still above 7.8, repeat steps 1-3.

DANGER - CAUSES SEVERE BURNS

This product contains sodium bisulfate. Avoid contact with skin, eyes, or clothing. Do not mix with household chemicals. Do not mix directly with other spa chemicals. Harmful if swallowed.

FIRST AID:

IF SWALLOWED: Call a poison control center or doctor immediately. If conscious, immediately give 2 to 4 glasses of water, and do not induce vomiting unless told to do by poison control.

EYE CONTACT: Hold eye open and rinse gently with cool water for 15-20 minutes. Remove contact lenses, if present, after 5 minutes, then continue rinsing eye. Call a poison control center or doctor for treatment advice.

SKIN CONTACT: Immediately flush with water for 15 minutes. If burns occur obtain medical attention.

STORAGE AND DISPOSAL:

STORAGE: Keep dry and in original container in a cool, dry, well-ventilated place. Do not store with chlorine, bromine, or oxidizing agents. Keep container tightly closed when not in use.

DISPOSAL: Use entire contents, then triple rinse and offer for recycling or dispose in accordance with state and local regulations. To dispose product in partly filled containers or for large quantities call your local solid waste agency for disposal instructions. Do not reuse empty container.

NOTE: Buyer assumes all responsibility for safety and use not in accordance with directions.

2760
149-014091S12
998-MH0500G01
Rev No. 0418

Distributed by ESSENTIALS
5070 Wallace Drive • Cumming, GA 30041
Essentials-SpaSupplies.com

