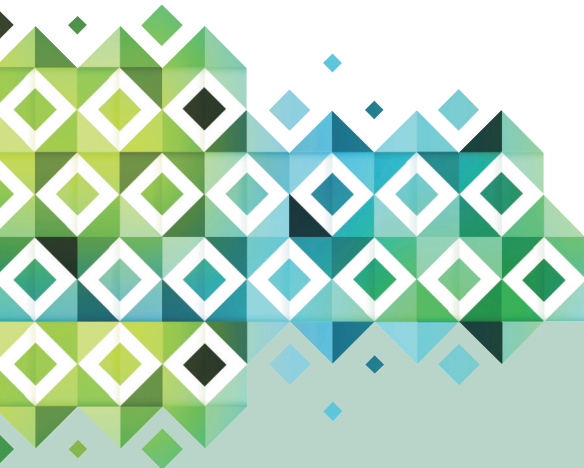




Mineral Harmony™

LIFT

Increases pH and Alkalinity



ACTIVE INGREDIENT:

Sodium Bicarbonate100%

CAUTION

KEEP OUT OF REACH OF CHILDREN

See side panel for First Aid and additional precautionary statements.

Net Weight: 1 lb.

Mineral treated spas require the regular testing and balancing of the water for the minerals to perform properly. Mineral Harmony was developed exclusively for use with mineral treated spa water.

Mineral Harmony LIFT will increase the pH and alkalinity of spa water. The total alkalinity of spa water should be maintained between 80 and 150 ppm. The pH should be within 7.2 to 7.8 ppm.

DIRECTIONS FOR USE:

Mineral Harmony LIFT should be used as necessary when pH is below 7.2.

1. Add **LIFT** at the rate of 1 oz. (2 tbsp) per 500 gallons of water. This dosage will increase the total alkalinity approximately 10 ppm and may be added directly to the spa or hot tub when pump is on high speed.
2. After initial application, allow water to circulate approximately 2 hours.
3. Retest total alkalinity and add second dose of **LIFT** if required. Continue process until total alkalinity falls in desired range of 80 to 150 ppm.
4. Once proper total alkalinity has been attained, test for a proper pH range of 7.2 to 7.8.
5. If pH needs to be raised, use **LIFT** at a rate of 1/2 oz. for spas up to 500 gallons.
6. Wait 30 minutes, retest and adjust as necessary.

NOTE: Draining and cleaning of the spa or hot tub is recommended every 3 months. Never mix this product with any dry or liquid chlorine product as a dangerous reaction may occur.

CAUTION: Avoid contact with skin or eyes. Wash thoroughly after handling. This product may be irritating or harmful if taken internally. Do not store this product in close contact with chlorine products. Do not mix with any other chemical – mix only with water.

FIRST AID:

EYE CONTACT: Hold eye open and rinse gently with cool water for 15-20 minutes. Remove contact lenses, if present, after 5 minutes, then continue rinsing eye. Call a poison control center or doctor for treatment advice.

IF INHALED: Move person to fresh air. If irritation occurs, get medical attention.

SKIN CONTACT: Wash all affected areas with soap and water. Get medical attention if irritation occurs and persists. Wash clothing with warm soapy water before reuse.

IF SWALLOWED: Rinse mouth with water. Dilute by giving 1 or 2 glasses of water. Do not induce vomiting. Never give anything by mouth to an unconscious person. If symptoms persist contact a doctor or a poison control center.

STORAGE AND DISPOSAL:

STORAGE: Store in a cool, dry place. Keep product in tightly closed container when not in use. Store out of reach of children and away from heat.

DISPOSAL: Place empty container in trash or offer for recycling if available. To dispose product in partly filled containers or for large quantities call your local solid waste agency for disposal instructions. Do not reuse empty container.

NOTE: Buyer assumes all responsibility for safety and use not in accordance with directions.

2755

149-016017S12
998-MH0700G01
Rev No.0418

Distributed by ESSENTIALS
5070 Wallace Drive • Cumming, GA 30041
Essentials-SpaSupplies.com

