

USE AND CLEANING INSTRUCTIONS

GAME's AquaQuik™ Spa & Pool Vacuum is part of the AquaQuik™ line made to simplify all your spa and pool needs.

Cleanup is easy - the simple pump action creates suction that draws in water and debris from the pool or spa as you pull the handle out. Push the handle in and the dirt and debris are trapped inside the special filter basket as the water flows out.

The Vacuum requires no special hoses or hookups. It comes with a specially designed Slide-On Angled Brush, a Dual Nozzle (Bell and Narrow, already attached to the Vacuum), a Wide End Nozzle (attaches to the Narrow End of the Dual Nozzle) and a Wall Mount Bracket for storage.

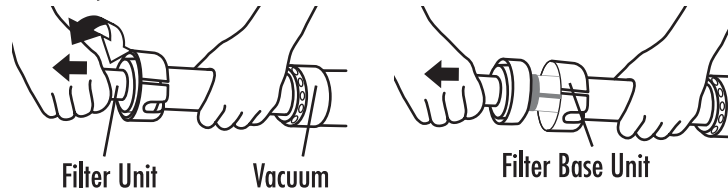
CLEANING YOUR SPA OR POOL

Always start by priming the unit by placing the Nozzle end of the Vacuum underneath the surface of the water. Pump the unit's handle in and out several times to remove air that may be trapped in the Vacuum. Always begin with the handle pushed completely in. Pull the handle out to draw debris in.

- Use the narrow end of the Dual Nozzle to remove rocks and debris.
- Use the bell end of the Dual Nozzle to remove floating debris; place over the debris and push below the surface of the water, trapping the debris.
- Use the Wide End Nozzle to remove dirt. Slide the Brush Attachment onto the Wide End Nozzle to scrub stubborn dirt spots.

EMPTYING THE FILTER BASKET

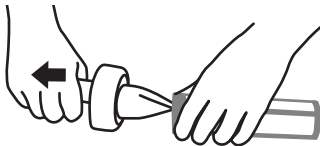
- 1 Twist and pull Filter Unit to remove.



- 2 Grasp the plastic band at the base of the screen. **DO NOT GRASP THE FILTER BASKET SCREEN!** Gently rotate the Filter Unit toward you until you feel it stop.



- 3 Gently pull the Filter Basket to separate it from the main Filter Unit. Discard the contents. Rinse with water to remove any other debris that may be left inside the basket.



CAUTION: DO NOT SCRAPE VACUUM OR NOZZLES AGAINST ACRYLIC SPAS AS THIS WILL DAMAGE THE SURFACE OF THE SPA.

REPLACING THE FILTER BASKET

Locate the raised notches on the inside of the Filter Basket. Line these up with the locking tabs on the Filter Unit and then slide the Filter Basket onto the Unit. Rotate the Basket away from you until it locks into place.

Insert the Filter Unit back into the Vacuum Filter Unit Base. Press and rotate the Filter Unit into the Filter Unit Base so it snaps into place.

IT IS RECOMMENDED THAT YOU ALWAYS DRAIN EXCESS WATER FROM THE UNIT AFTER USE BY REMOVING THE FILTER UNIT.

Simply follow the above instructions ("Emptying the Filter Basket") for the removal of the Filter Unit. Replace the Filter Unit after emptying.

Look for GAME's AquaQuik™ Spa & Pool Brush with Pumice and Backwash Hose Reel at your favorite store. For other products that will make your spa and pool experience more enjoyable, check out what we have available for you at www.game-group.com.

LIMITED WARRANTY STATEMENT

General Terms

This Limited Warranty applies to the product enclosed ("the Product") distributed by Great American Duck Races, Inc., an Arizona corporation, doing business as Great American Merchandise and Events ("GAME"), sold with this Limited Warranty Statement. This Limited Warranty is applicable in all countries.

GAME warrants that the Product you have purchased from GAME is free from defects in materials or workmanship under normal use during the warranty period. The warranty period starts on the date of purchase and continues for ninety (90) days. Your dated sales or delivery receipt, showing the date of purchase of the Product, is your proof of the purchase date.

This Limited Warranty does not apply to expendable parts. This Limited Warranty does not extend to any product from which the serial number has been removed or that has been damaged or rendered defective (a) as a result of accident, misuse, abuse or other external causes; (b) by operation outside the usage parameters stated in the Instruction Sheet that shipped with the Product; (c) by the use of parts not manufactured or sold by GAME; or (d) by modification or service by anyone other than GAME.

Limitation of Liability

GAME is not liable for any damages caused by the Product or the failure of the Product to perform, including any direct or indirect damages for personal injury, lost profits, lost savings, incidental damages, consequential damages, or any other pecuniary loss arising out of the use or inability to use the Product. GAME is not liable for any claim made by a third party or made by you for a third party.

EXCEPT AS EXPRESSLY SET FORTH IN THIS LIMITED WARRANTY, GAME MAKES NO OTHER WARRANTIES, EXPRESS OR IMPLIED, INCLUDING ANY IMPLIED WARRANTIES OF MERCHANTABILITY AND FITNESS FOR A PARTICULAR PURPOSE. GAME EXPRESSLY DISCLAIMS ALL WARRANTIES NOT STATED IN THIS LIMITED WARRANTY. ANY IMPLIED WARRANTIES THAT MAY BE IMPOSED BY LAW ARE LIMITED TO THE TERMS OF THIS WORLDWIDE LIMITED WARRANTY STATEMENT.